

Stormwater The Problem & Solutions

SNOHOMISH



CONSERVATION DISTRICT

Derek Hann P.E.

Civil Engineer

(425) 377-7012

derek@snohomishcd.org

Snohomish Conservation District

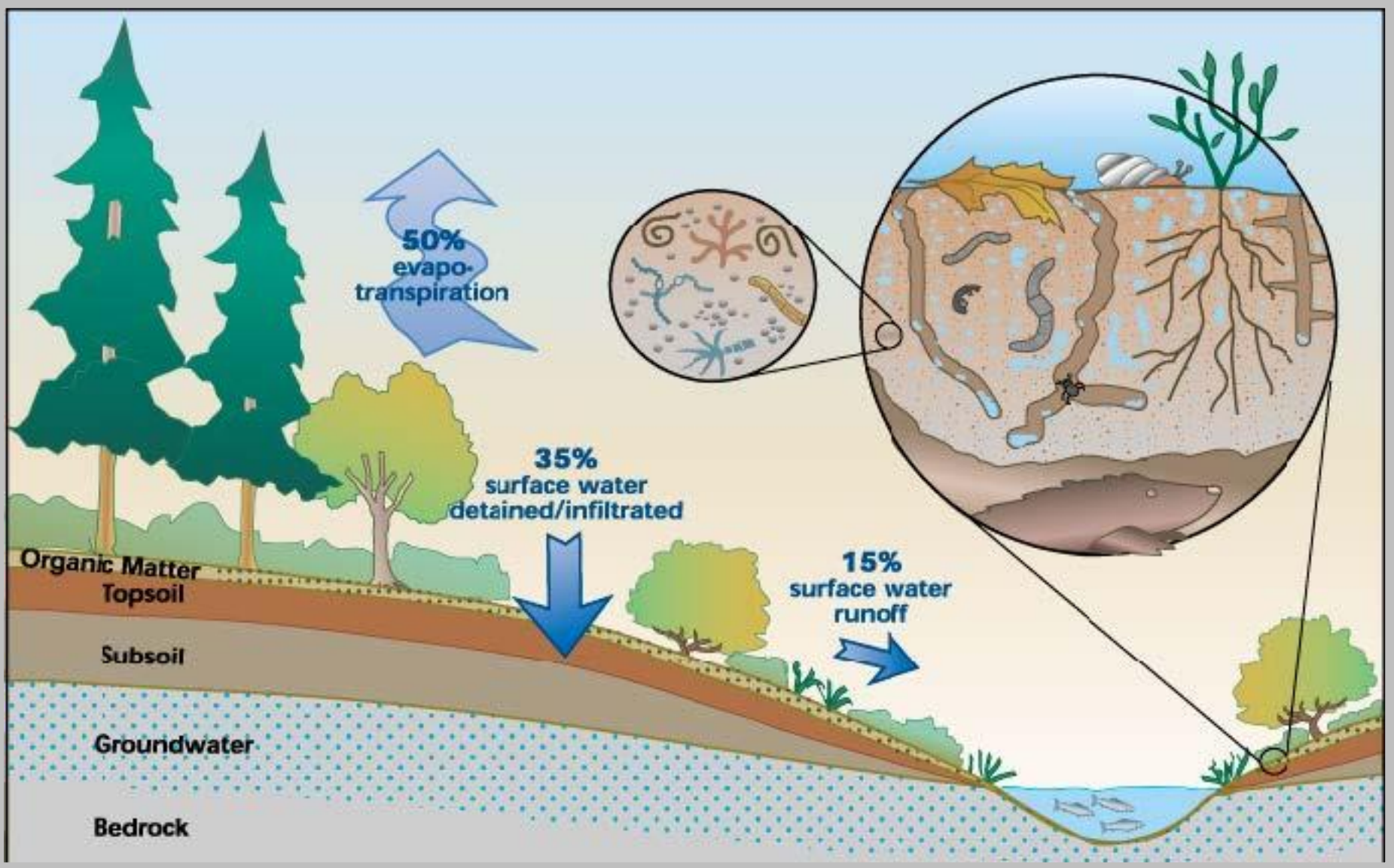
- Established in 1941 as the Soil Conservation Service
- State Government
- Property Tax funding of \$8 per parcel and \$0.08/acre. (2020)
- Significant additional grant funding
- Non-regulatory and 100% voluntary.

Services Provided

- Agricultural Support
- Habitat Restoration
- Education & Outreach
- Urban & Suburban Conservation
 - Stormwater Support

The Stormwater Problem

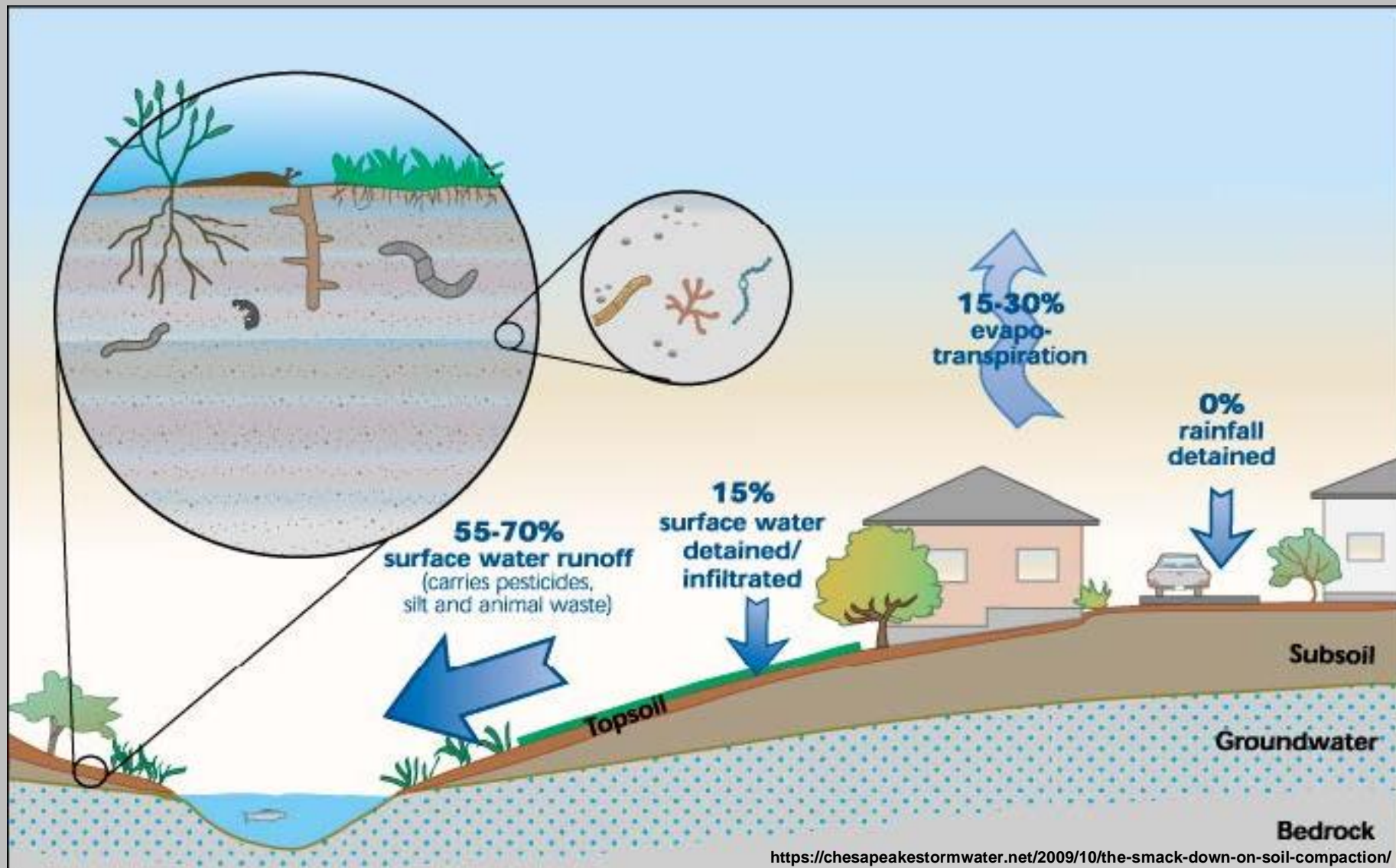




Pervious



Urban Watershed

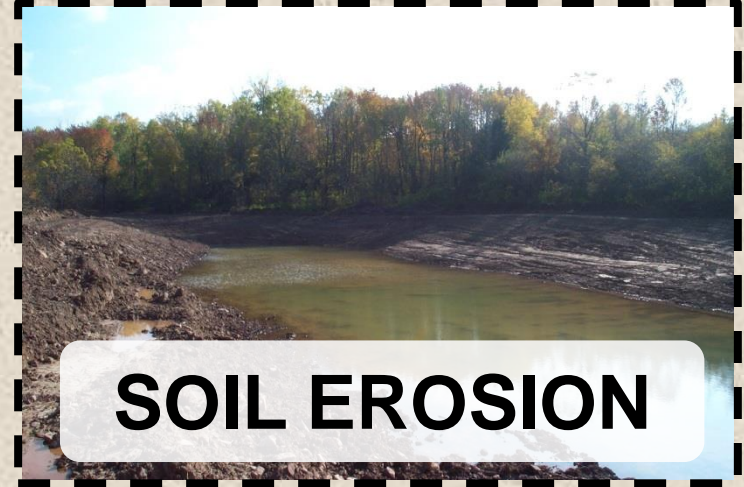


Impervious

The Stormwater Problem



FLOODING



SOIL EROSION



POLLUTION



LESS GROUNDWATER



PLEASE DON'T



COFFEE BEANS





Detention & Infiltration



Stormwater Treatment



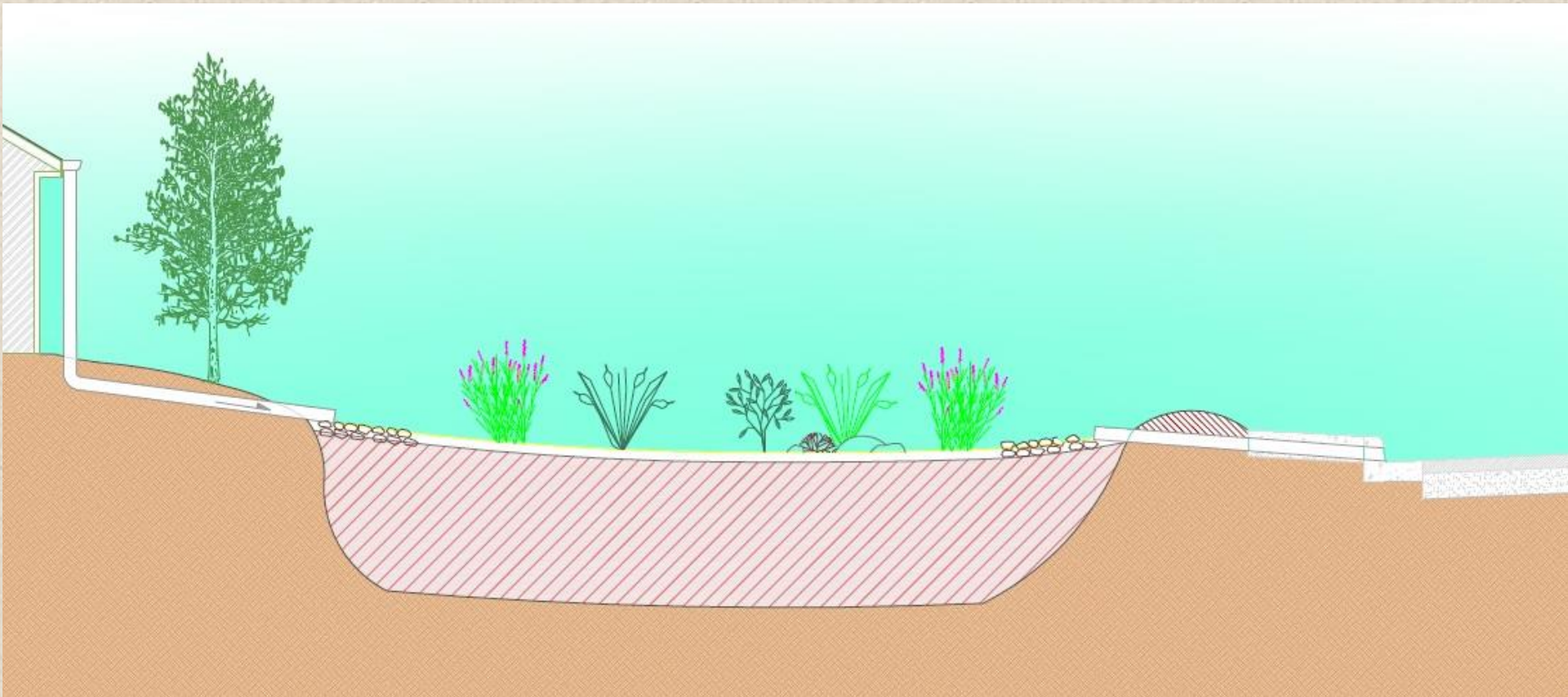


Rain Garden Handbook

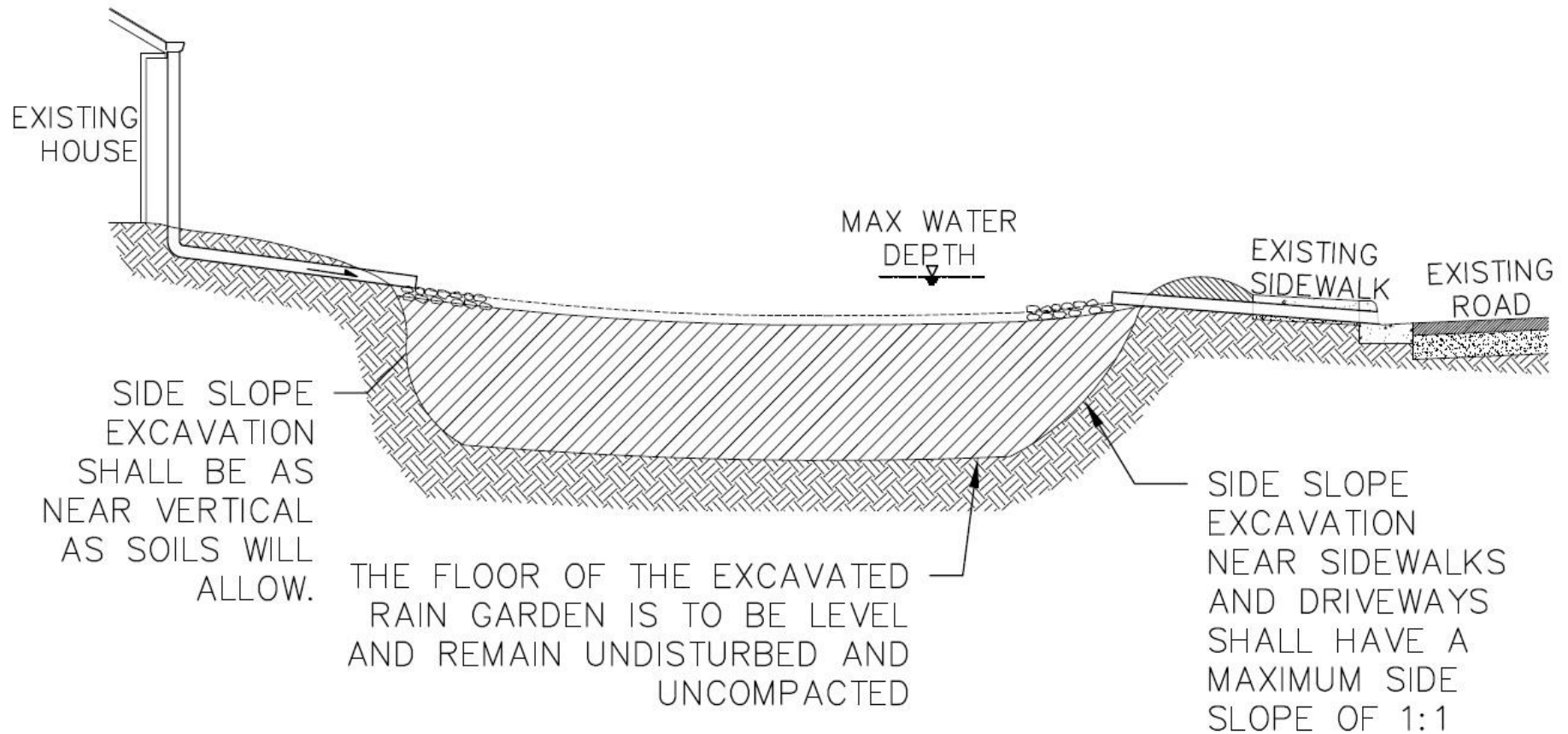
for Western Washington

A Guide for Design,
Installation, and Maintenance

What is a Rain Garden

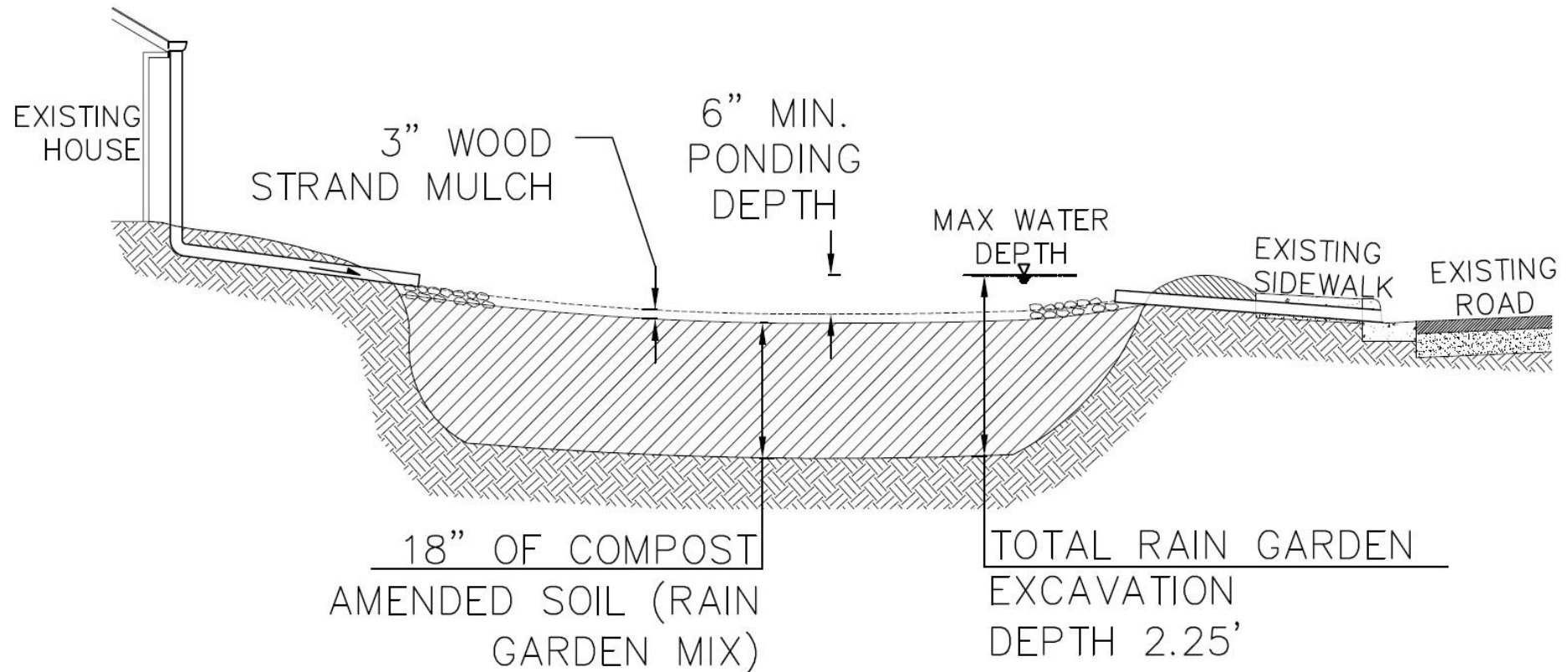


Rain Garden Excavation





Rain Garden Construction





Rain Garden Soil Mix

- Needs to be 18 inches deep
- Needs to be placed dry
- Minimal compaction during and after soil placement

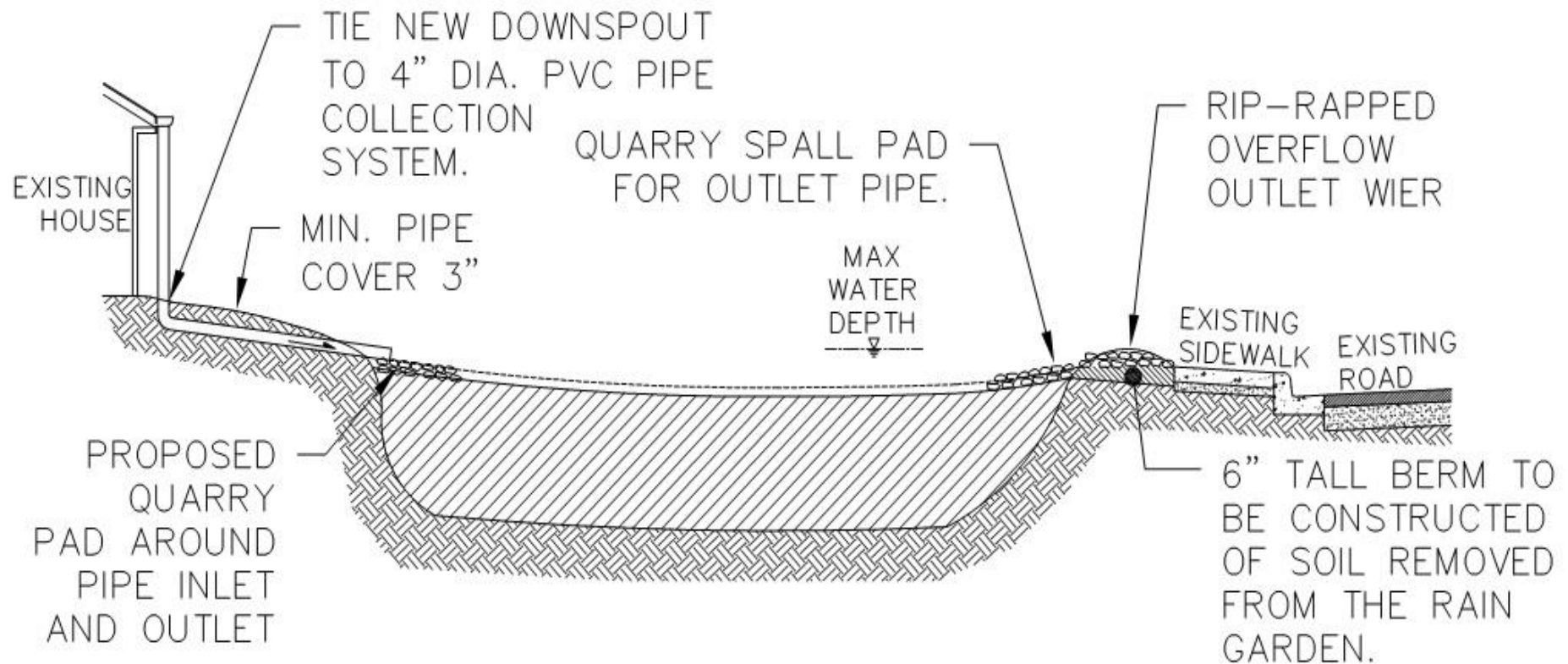


Mulch

- Woody and coarse
- Shredded
- Best product is called “Animal Friendly Hog Fuel”
- No Bark



Rain Garden Inlet/Outlet





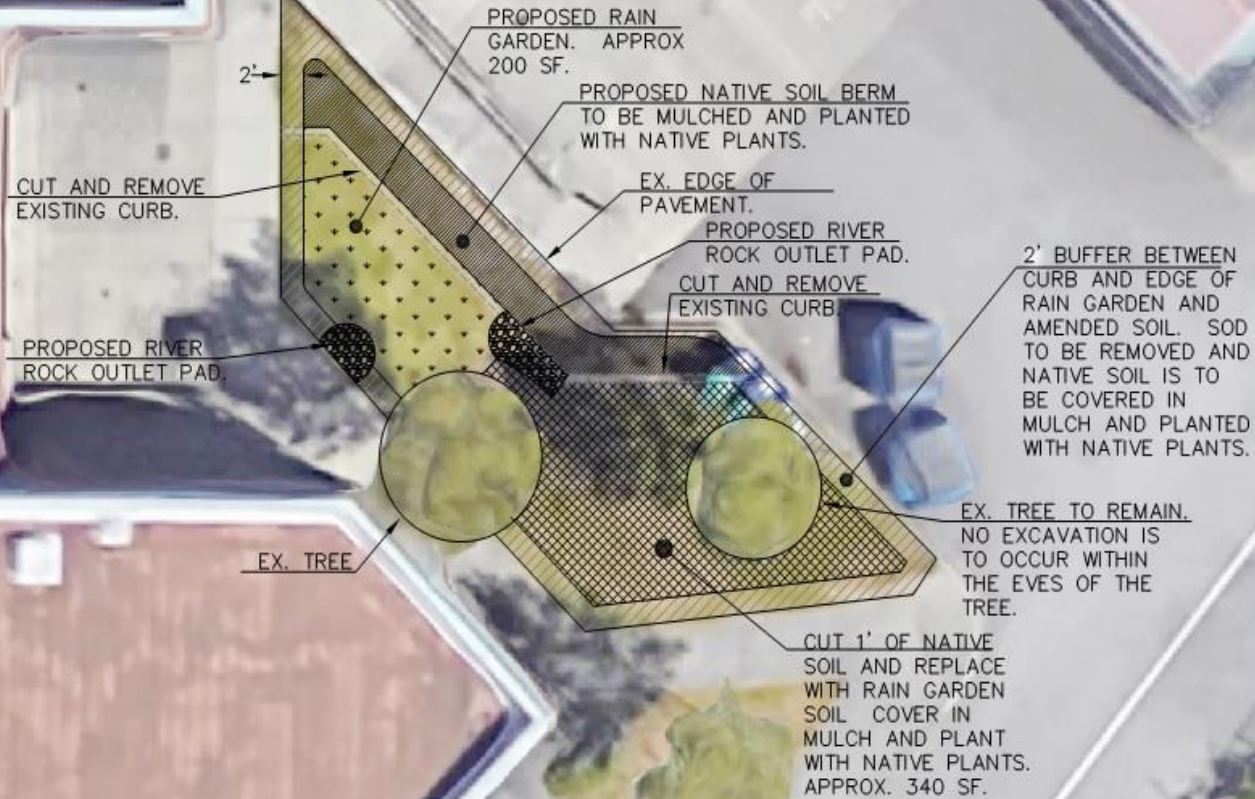
Offsets

- 10' from buildings
- 5' from utilities
- 2' from pavement
- Outside of tree crowns





SITE PLAN
SCALE: 1"=10'



DEEKE HANN, P.E.
3208 91ST AVE., SUITE A
LAKE STEVENS, WA 98258
(425) 335-6034 X119
DEEKEHANN@GMAIL.COM



REVISION: 001
DATE: 03/17
DRAWN: 001
DATE: 03/17

104

Jackson High School Rain Garden Plan
SITE PLAN

SNOHOMISH COUNTY

02-2-1

INFLOW WITH PIPE

ZONE 2

ZONE 1

ZONE 3

OVERFLOW

Emergents

Ornamental Grasses

Deciduous Shrubs



Rain Garden Planting Zones

- A Rain Garden has 3 zones
- Zone 1 Dimensions
 - 4' Wide minimum
- Zone 2 Dimensions
 - 1' wide minimum, 3' wide maximum
- Zone 3 Dimensions
 - 2' wide minimum, no maximum

Stormwater Harvesting













Guzzlers



IBC Totes





Rain Harvesting Tips

- **Location is important**
- **Tightly covered barrels or tanks**
- **Every collection system needs:**
 1. **Barrels or tanks**
 2. **Downspout extender or adaptations**
 3. **Sturdy, level base**
 4. **Inlet with screen**
 5. **Spigot**
 6. **Overflow**
 7. **Clean out access**

2 Most Common Questions

- **Isn't harvesting rainwater illegal?**
- **Is water from my roof safe for vegetables?**

Is Collected Rain Water Safe for?

- **Lawn and Landscaping**
- **Edible plants**
- **Livestock/Pets**
- **Human Consumption**

[Home](#) » [Research](#) » [Sustainable Living](#) » [Series](#) » [Stormwater Solutions: Curbing Toxic Runoff](#) » [A Green Light for Using Rain Barrel Water on Garden Edibles](#)

A GREEN LIGHT FOR USING RAIN BARREL WATER ON GARDEN EDIBLES

New research bolsters the case for roof runoff for irrigation—with some notes of caution.



Rain Barrel by Barb Howe used under CC BY 2.0



Author: **Lisa Stiffler**

(@lisa_stiffler) on January 7, 2015 at 6:30 am

This article is part of the series [Stormwater Solutions: Curbing Toxic Runoff](#)

Sightline Institute's work is made possible by the generosity of people like you!

Thanks to **Nicholas Wagner** for supporting a sustainable Northwest.

[DONATE TODAY](#)

Stay up to date on the Northwest's most important sustainability issues.

[SUBSCRIBE](#)



**Potable
Filters**

Terracing

















Questions?

SNOHOMISH



CONSERVATION DISTRICT

Derek Hann P.E.

Design Engineer

(425) 377-7012

derek@snohomishcd.org